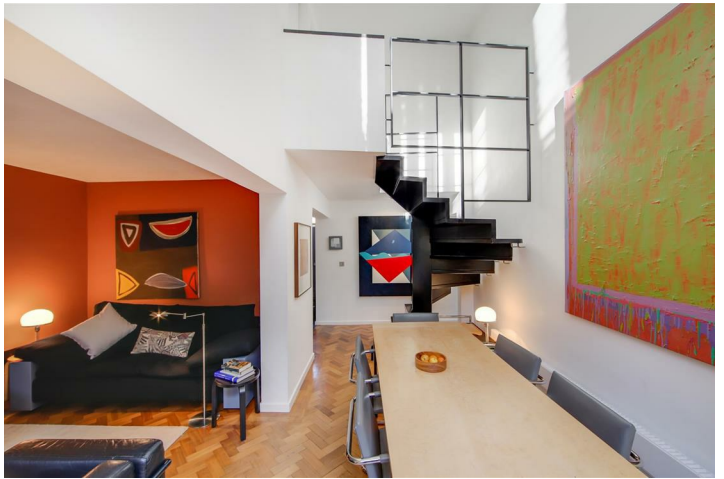


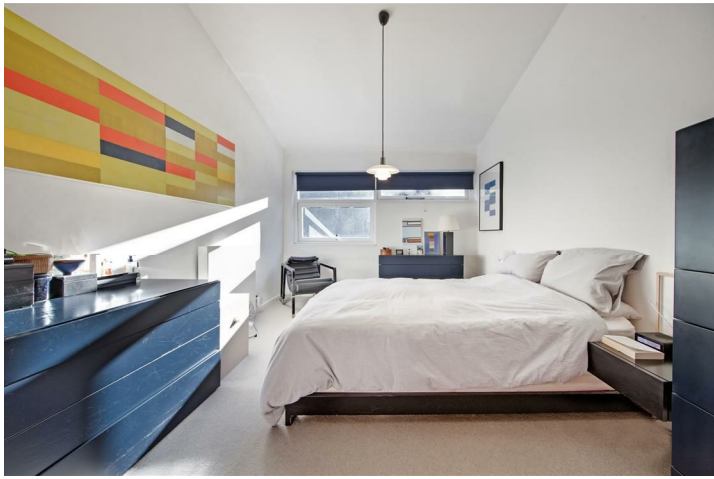
Hillside Gardens, Highgate, N6 5SU

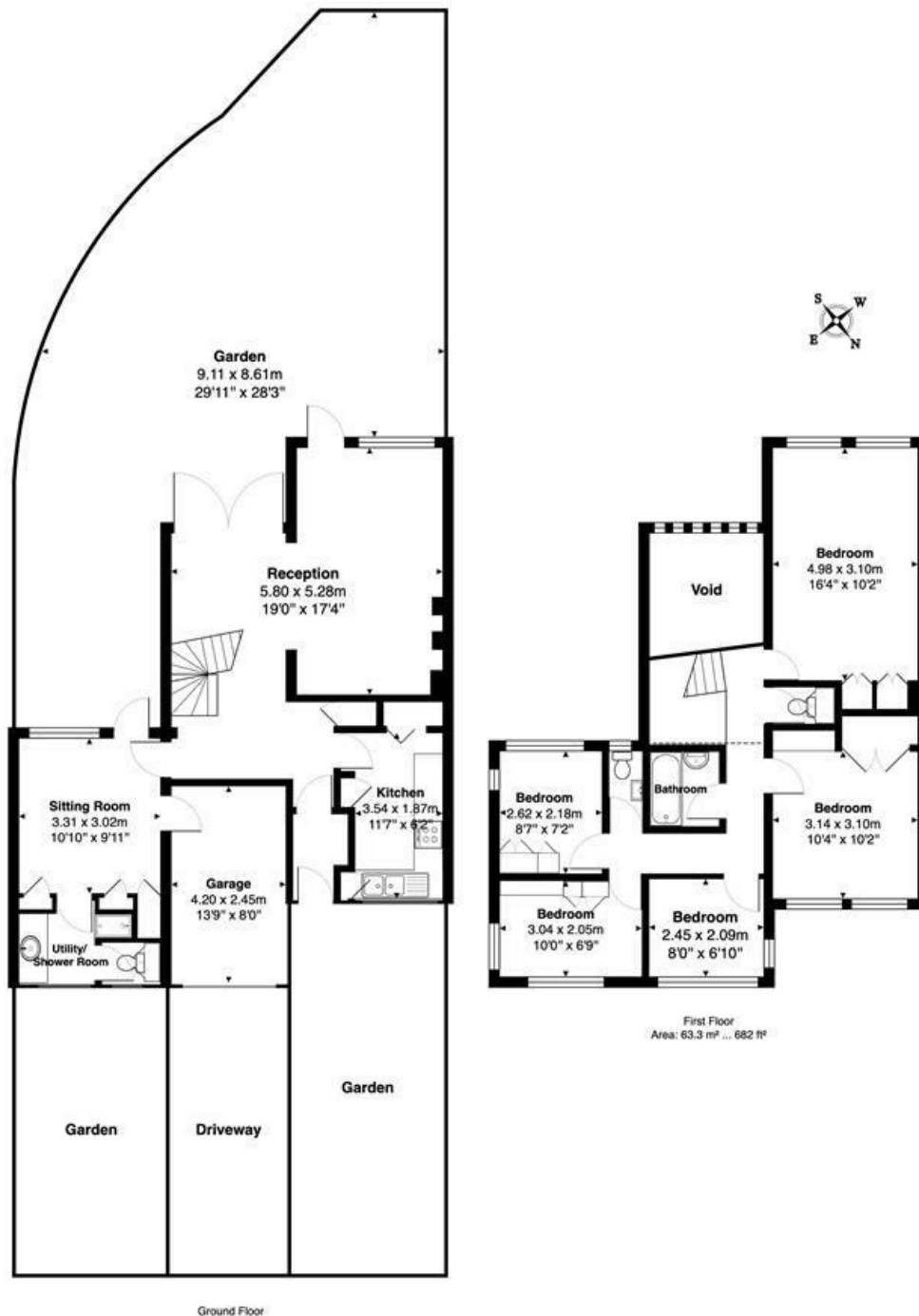
£1,595,000

Extended some years ago, this end of terrace mid-century modern house is flooded with light and is one of the largest of its type in this "triangle" of houses. Situated in this highly desirable location, this family home commands attention! The house is the briefest of walks from Highgate's numerous and highly regarded schools, Highgate Northern line tube, various buses and local shops. Highgate Village with its shops and eateries, the Parkland Walk, and both Highgate and Queens Woods and are also conveniently close.

* 5 Bedrooms * Bathroom * 2 Separate WCs * 2 Reception Rooms * Fitted Kitchen * Utility/Shower Room * Integral Garage
 * Driveway/Off Street Parking * Private South Facing Garden * Large Communal Garden * Council Tax Band F *







Total Area: 135.9 m² ... 1463 ft² (excluding void, driveway, garden)

All measurements are approximate and for display purposes only.

These details are subject to contract

Energy Efficiency Rating		
	Current	Potential
Very energy efficient - lower running costs		
(92 plus) A		
(81-91) B		
(69-80) C		
(55-68) D		
(39-54) E		
(21-38) F		
(1-20) G		
Not energy efficient - higher running costs		
England & Wales	EU Directive 2002/91/EC	72

Environmental Impact (CO ₂) Rating		
	Current	Potential
Very environmentally friendly - lower CO ₂ emissions		
(92 plus) A		
(81-91) B		
(69-80) C		
(55-68) D		
(39-54) E		
(21-38) F		
(1-20) G		
Not environmentally friendly - higher CO ₂ emissions		
England & Wales	EU Directive 2002/91/EC	